

## MODEL D215s



## TECHNICAL SPECIFICATIONS



Dynamic, Accurate, Solid. The audiophile's choice. Where sound quality and Transients free of overhang are paramount. Simply no better expression of bass performance than our push-pull subs. Ground up drivers developed by our team of engineers. Carbon fiber composite diaphragms, multiple aluminum shorting rings, massive magnets, multi-layer Nomex spiders and lightweight aluminum voice coil wire are the key ingredients - Proprietary nonlinear modeling techniques allow us to simulate all these components and then optimize for real world driver performance - free air and in box. Further refinement is done with the aid of Klippel laser measurements to dial things in. To take performance to another level, the push-pull drivers reduce even order harmonics distortion by an additional 10-12dB. Powered by our 3.0kW amplifier, all functions and safeties are controlled by a 48-bit data bath DSP and 32-bit ARM M4 Cortex processor, able to react in microseconds, powerful enough to slam. All D-Series subs share our 2.4" LCD touchscreen display and ability to control advance settings using our App. Certified by THX Dominus, The D-Series subs are the world's first. A testament to the level of design and performance achieved.

### BASIC

**Dimensions (HxWxD)**  
805 x 500 x 650.5mm  
31.7 x 19.7 x 25.6"

**Weight**  
92.0 kg (202.4 lbs.)

**Available finishes**  
Piano black  
Custom finishes available

### TECHNICAL

**Alignment**  
Push-Pull, acoustic suspension

**Amplifier**  
3.0kW rms short term

**Display Interface**  
2.4" LCD color touchscreen

**App**  
iOS and Android

**Processor**  
32-bit ARM Cortex M4, double precision floating point math

**DSP Engine**  
Ti DSP 48-bit data paths

**Driver complement**  
(2)380mm, Carbon fiber diaphragm +/-30mm linear excursion

**Frequency Response**

- THX EQ  
20-200Hz (-6dB) / 16-210Hz (-10dB)
- Boost (Large Room) EQ  
15-200Hz (-6dB) / 13-210Hz (-10dB)

- Cut (Small Room) EQ  
24-200Hz (-6dB) / 18-210Hz (-10dB)

**Inputs**  
(2) Balanced XLR  
(2) Unbalanced RCA

**Outputs**  
(2) Balanced XLR unbuffered  
(2) Unbalanced RCA unbuffered

**Parametric EQ**  
10-Band PEQ with 3 user presets

**Low Pass filter**  
bypass, 30-160Hz, slope 6,12,18,24dB/oct

**Phase**  
variable 0-270°

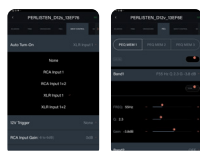
**Polarity**  
Normal / inverted

**Configurable Auto turn-on and 12v Trigger**  
XLR 1, XLR 1+2, RCA 1, RCA 1+2

**Certification**  
THX Dominus



**App Control**  
iOS and Android

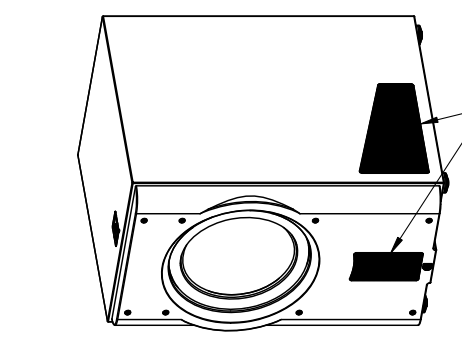
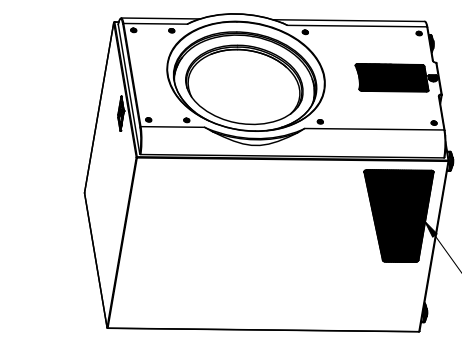


**Advanced APP User interface**  
Customizable turn-on controls and input selection, multiple PEQ's with presets.

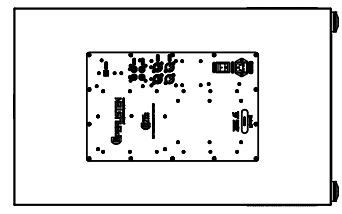
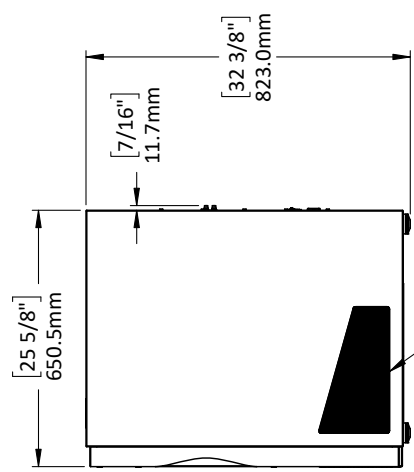
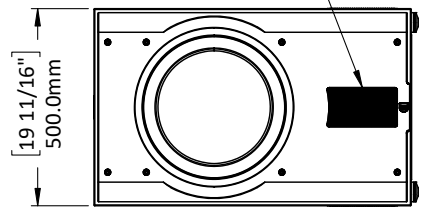
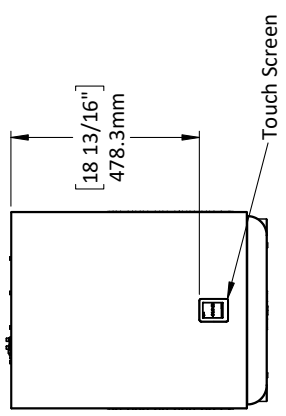


**Push-Pull**  
Asymmetrical Distortion killer

REVISIONS		DATE
REV.	DESCRIPTION	
1	Initial Release	4/11/2021



Please allow for airflow into listening room



D C B A

NAME	DATE	
TITLE:		Sheet1
SIZE	DWG. NO.	REV
A	PL_D215s_Architectural	1
SCALE: 1:16		SHEET 1 OF 1

**PROPRIETARY AND CONFIDENTIAL**  
 THE INFORMATION CONTAINED IN THIS DRAWING IS THE SOLE PROPERTY OF PERLISTEN AUDIO, LLC. ANY REPRODUCTION OR TRANSMISSION OF THIS DRAWING WITHOUT THE WRITTEN PERMISSION OF PERLISTEN AUDIO, LLC IS PROHIBITED.  
DRAWINGS ARE IN MILLIMETERS UNLESS OTHERWISE NOTED