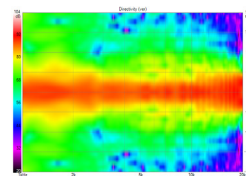
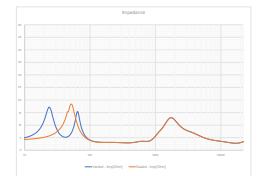


Horizontal Directivity



Vertical Directivity



Impedance

MODEL S5M



TECHNICAL SPECIFICATIONS



Sharing technologies and drivers from the flagship S7t. When the highest fidelity is what matters most. Featuring our proprietary DPC-Array controlling Mid/High frequencies, centered by our finest 28mm Beryllium dome and dual 28mm TPCD ultra-lightweight domes. All transducers are developed ground up by our engineers – bringing decades of research, culminating in this world class design. We teamed up with companies in the USA and Sweden to bring modern material science to hi-fi. Utilizing advanced Comsol acoustical modeling, our DPC-array is the result of 18 months of painstaking simulations and prototyping. The result is one of the most technologically advanced loudspeakers available. This new tweeter/waveguide DPC-Array delivers amazing accuracy, smoothness, and directivity control to handle the critical vocal range and delicate treble. All S-Series speakers share the same DPC-Array and benefit from our unique timbre matching technique across the entire series. Custom bass drivers made from thin-ply carbon diaphragms (TPCD) can be configured as bass reflex or acoustic suspension and adjusted for listener preference. Unparalleled dynamic range, low distortion and musical finesse. The PerListen S-Series speakers also have the distinguished honor to be the world's first and only loudspeakers to be certified for THX Dominus - their highest rating. A mark of achievement.

BASIC

Dimensions (HxWxD) without stand
600 x 240 x 400mm
23.6 x 9.5 x 15.7"

Weight
19.0 kg (41.8 lbs.)

Available finishes
Piano black, Gloss white
Custom finishes available

TECHNICAL

Enclosure Alignment
3-way bass reflex / acoustic suspension

Frequency Response (-10dB)
Bass reflex: 35 - 37kHz
Acoustic suspension: 41 - 37kHz

Driver complement
DPC-Array: 28mm Beryllium
28mm(2) Textreme TPCD
Woofers: 180mm(2) Textreme TPCD

Typical In Room bass extension
Bass reflex: 29Hz
Acoustic suspension: 32Hz

Sensitivity
89.6dB / 2.83v / 1.0m

Recommended Amplifier Power
100 - 300W RMS

Impedance
4Ω nominal / 3.0Ω min

SPL capability @1m (100-20kHz)
114.4dB peak
117dB peak <2% - 2nd, 3rd Harmonics

Response Linearity
80 - 20kHz +/-1.5dB window

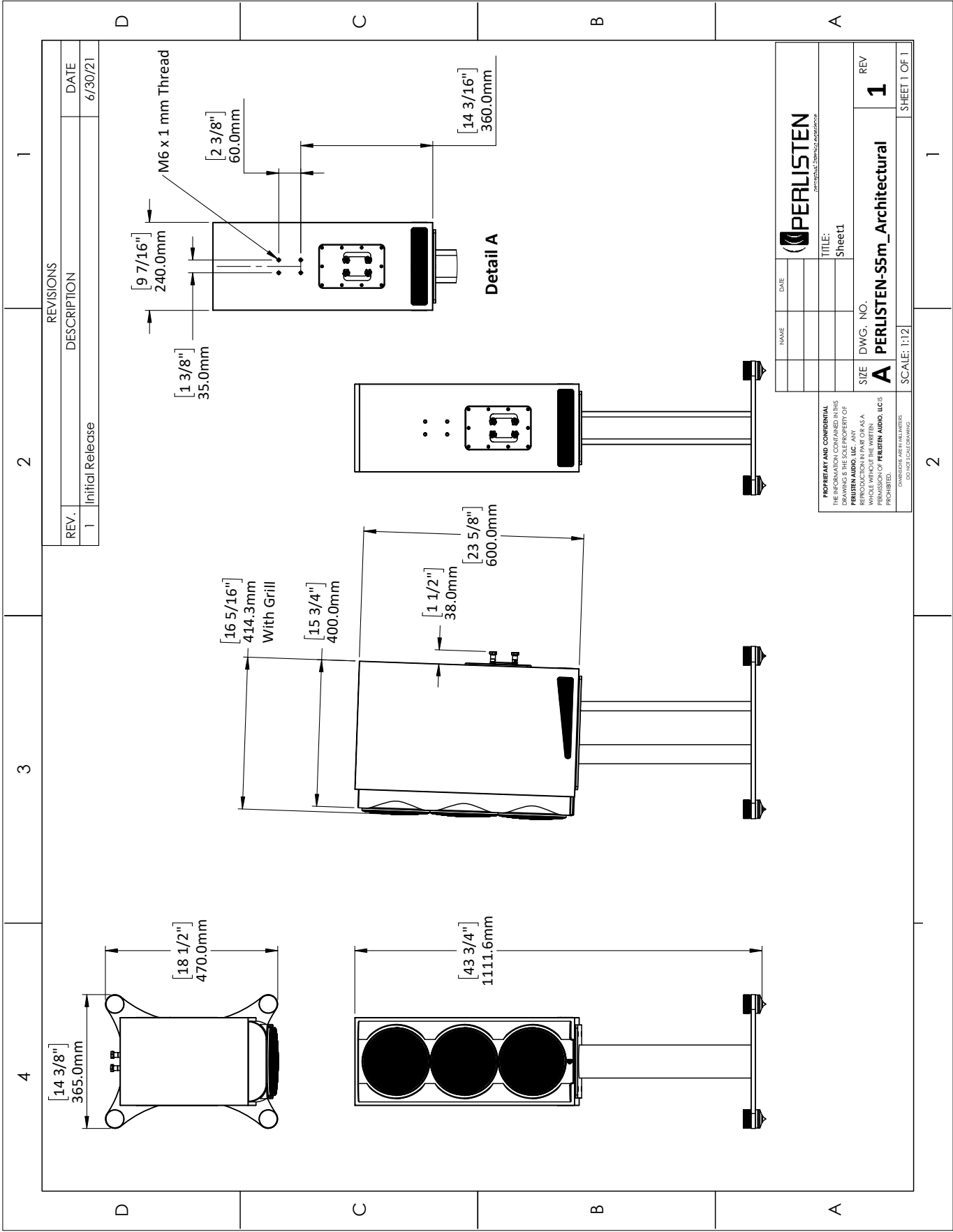
Certification
THX Dominus, THX Ultra



DPC Array
Directivity pattern control
*USA Patent pending



HPF (Hybrid Pulp Formulation)
Diaphragms made from mixed long fiber hardwood, bamboo and wool



REVISIONS		DATE
REV.	DESCRIPTION	
1	Initial Release	6/30/21

NAME	DATE
TITLE: Sheet1	
SIZE	DWG. NO.
A	PERLISTEN-S55m_Architectural
REV	1
SCALE: 1:12	
SHEET 1 OF 1	

PROPRIETARY AND CONFIDENTIAL
 THE INFORMATION CONTAINED IN THIS DRAWING IS THE SOLE PROPERTY OF PERLISTEN AUDIO, LLC. ANY REPRODUCTION OR TRANSMISSION OF THIS DRAWING WITHOUT THE WRITTEN PERMISSION OF PERLISTEN AUDIO, LLC IS PROHIBITED.
 DRAWING: AERIAL MILLWATER
 DATE: 06/30/21

1

2

3

4

D

C

B

A

D

C

B

A

1

2

3

4